

**LIVING HISTORIES,  
LASTING JOURNEYS**  
Sharing the heritage of  
St Leonard's Flamstead



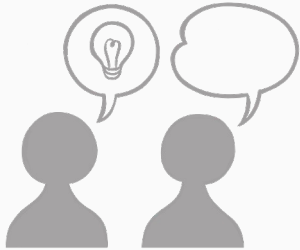
# How is a village made?

The making of the village of Flamstead  
and St Leonard's Church

# Learning Objective

To learn how the village of Flamstead grew around St Leonard's Church.

# What do you know about villages?



5 minutes!

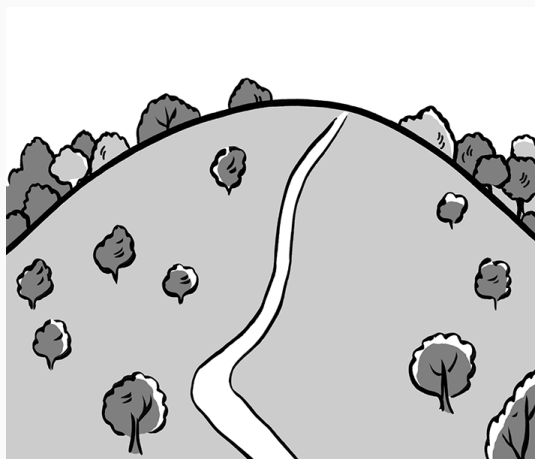
What is a village?

Tell your partner

3 things you know

about a village

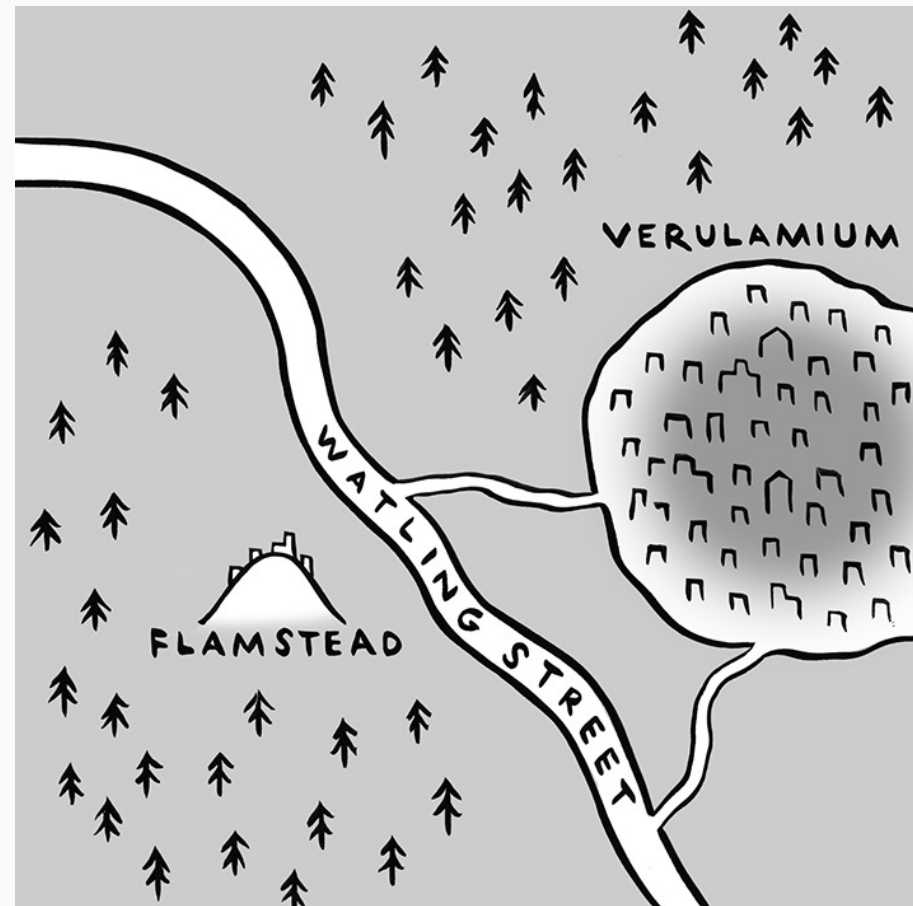
# How to make a village in 3 easy steps





# Step 1: Find a suitable place for Your Village

- The Romans built the city of Verulamium.
- We now know the city as St Albans.



# Flamstead: A village on a hill

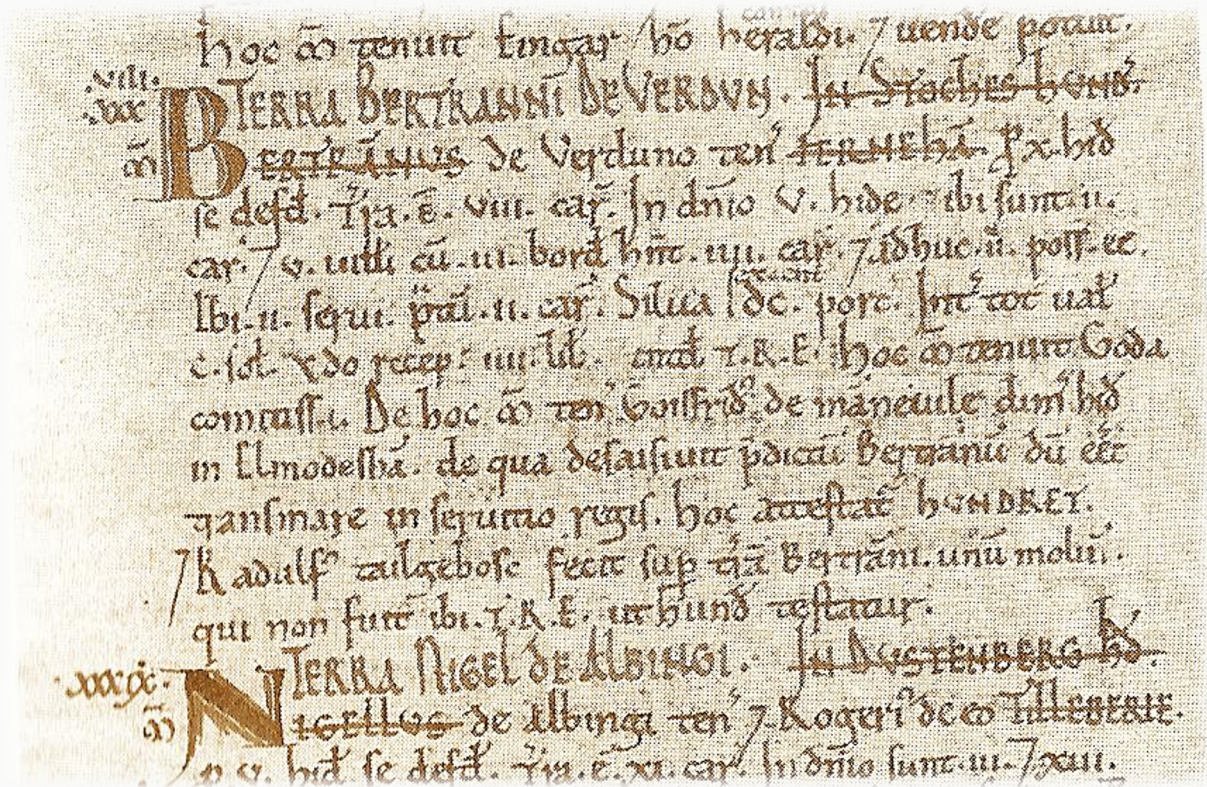
- Flamstead was built on a hill.
- It is close to the Roman road of Watling Street.



# Who owned Flamstead?

- In 1086 Flamstead belonged to the family of Ralph de Toni

Detail of a [page from the Domesday Book](#).



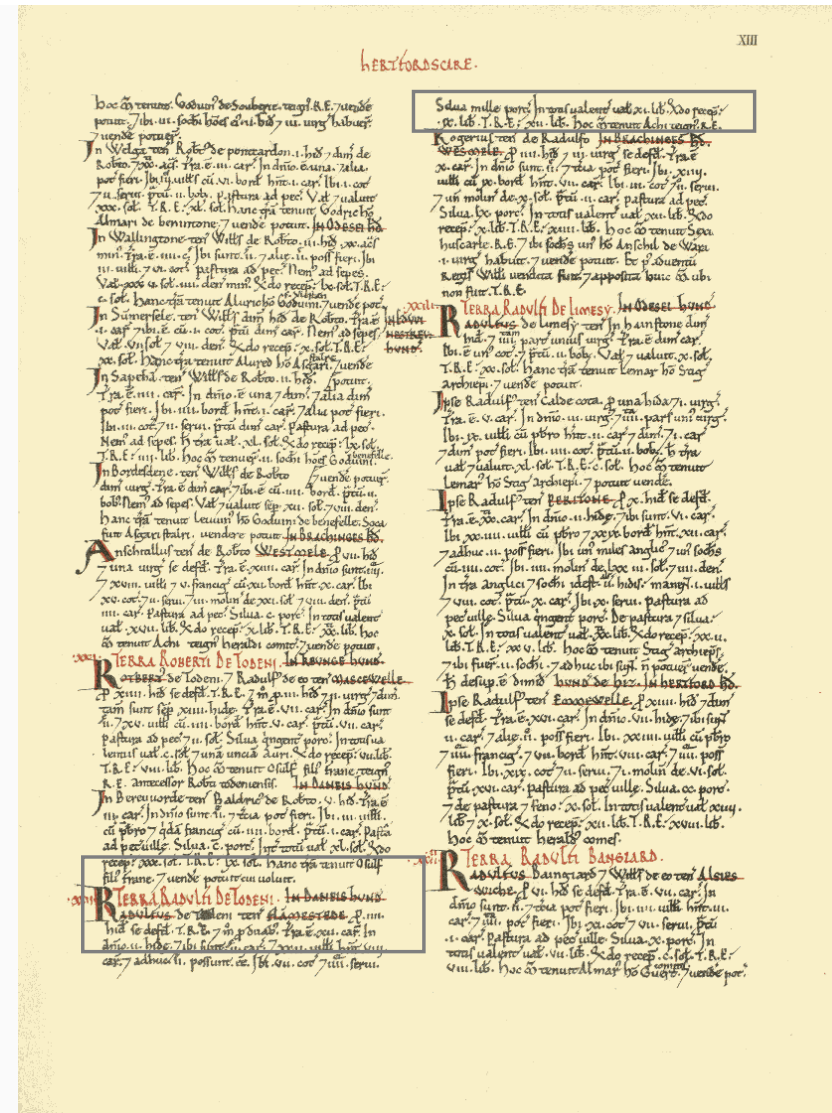


# Flamstead in 1086

The Domesday Book says there were:

- 22 villagers
- 7 cottagers
- 4 slaves
- 12 fields or ploughlands and woodland
- 1,000 pigs.

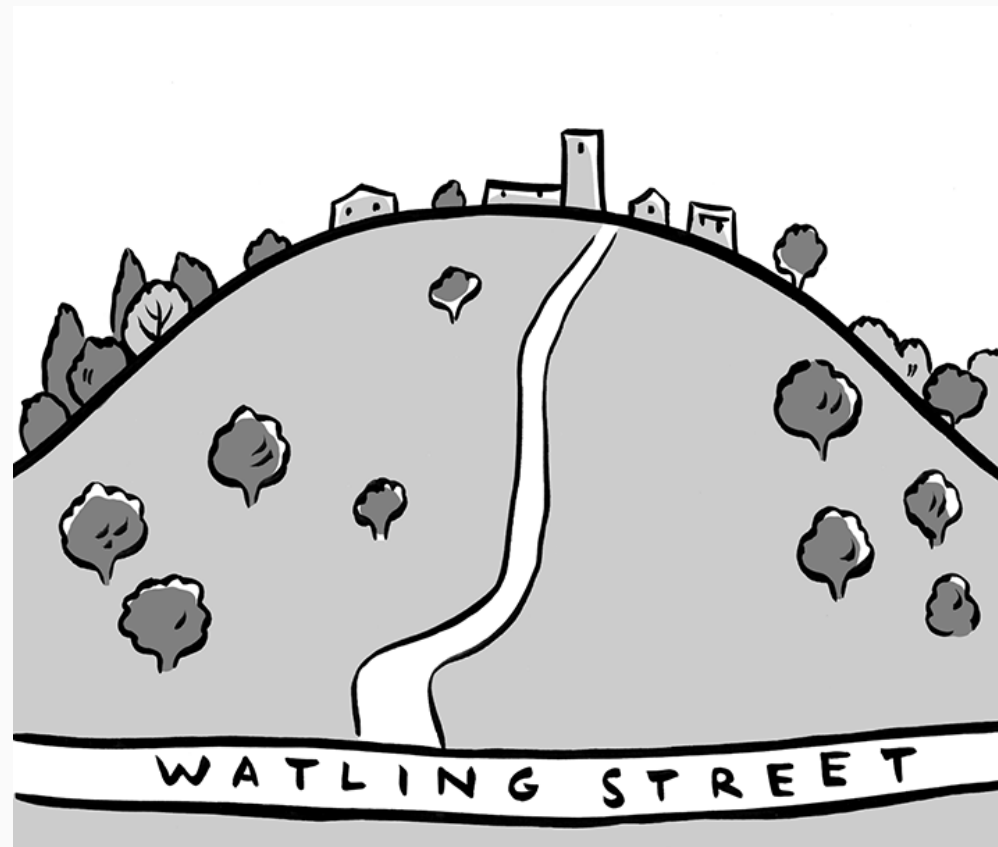
[The page of the Domesday book listing Flamstead.](#)





# The early village of Flamstead

- A stone tower was built in the 12<sup>th</sup> Century.
- This was the beginning of St Leonard's Church.



## Step 2: Build a church



- The stone church was built to worship God



Lord of the Manor  
of Flamstead



(Lord of the Manor - Landowner)

# Christina of Markyate



Christina of Markyate

- Flamstead was important because of Christina of Markyate.
- She lived near the site of the Church.



(St Leonard & Christina of Markyate)

# Who lived and worked in Flamstead?



Architect



Master Mason



Stone Mason



Carpenter



Blacksmiths

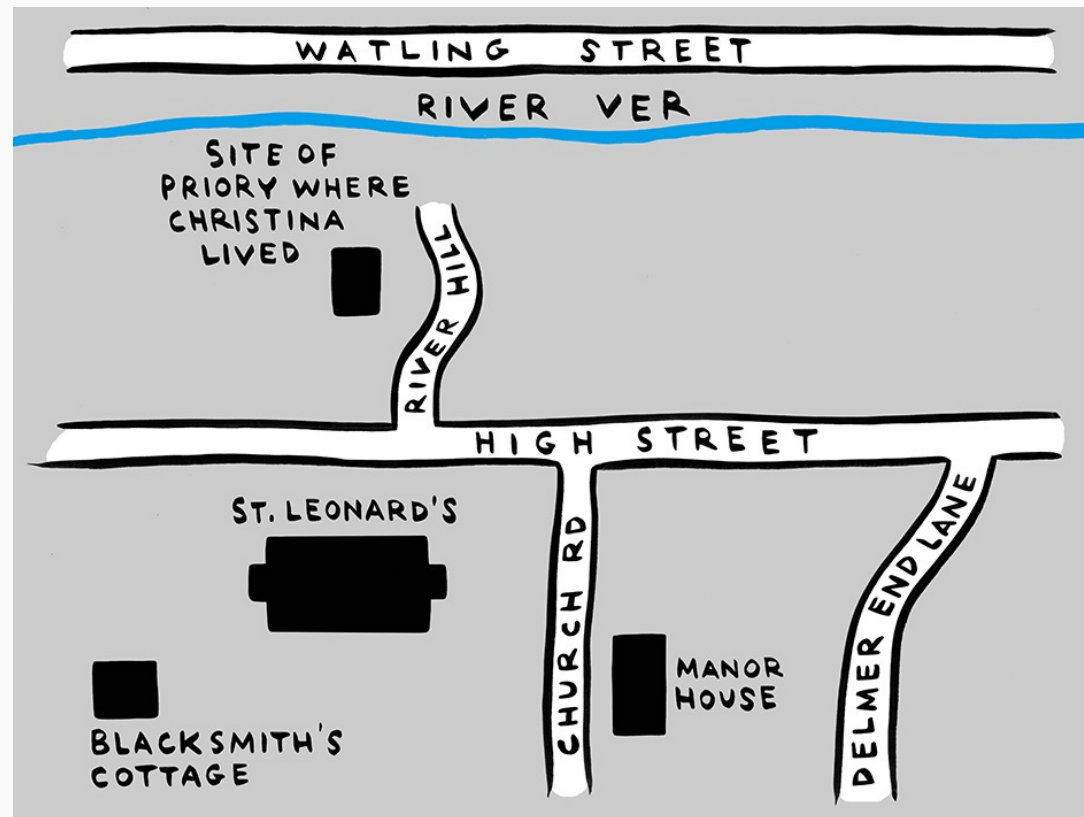


(Who's Who)



# See Flamstead's history today

- We can see where some of the workers may have lived.



## Step 3: Grow a community



## Step 3: Grow a community

- Around 1299, an 8-day fair was created to celebrate St Leonard each November.
- St Leonard was the patron saint of prisoners.



(St Leonard)



# A community growing alongside St Leonard's

- The Village grew as the church building grew
- Everyone went to the Church

There were:

- bakers
- butchers
- shop keepers
- innkeepers.





# Flamstead today

In the Village today there are:

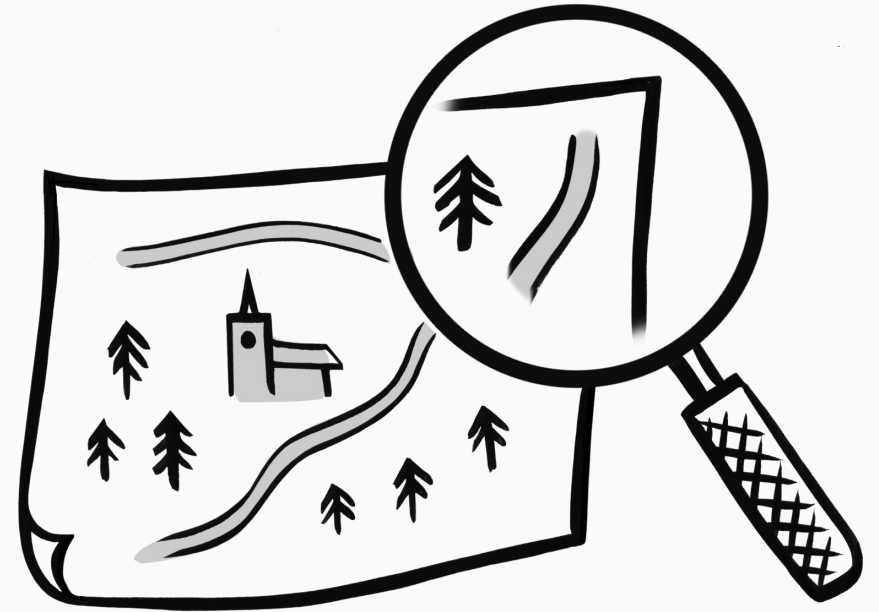
- about 1300 residents
- 1 shop
- 3 pubs
- 1 school
- 2 churches
- many community groups and events.



Copyright [Chris Reynolds](#)

# Task 1: Exploring Flamstead

- Look at [modern day Flamstead on Google Earth](#).
- What can you see?



[Flamstead on Google Earth](#)

## Task 2: What has St Leonard's Church seen?

If St Leonard's Church could talk, what would it tell us about Flamstead?



Master Mason

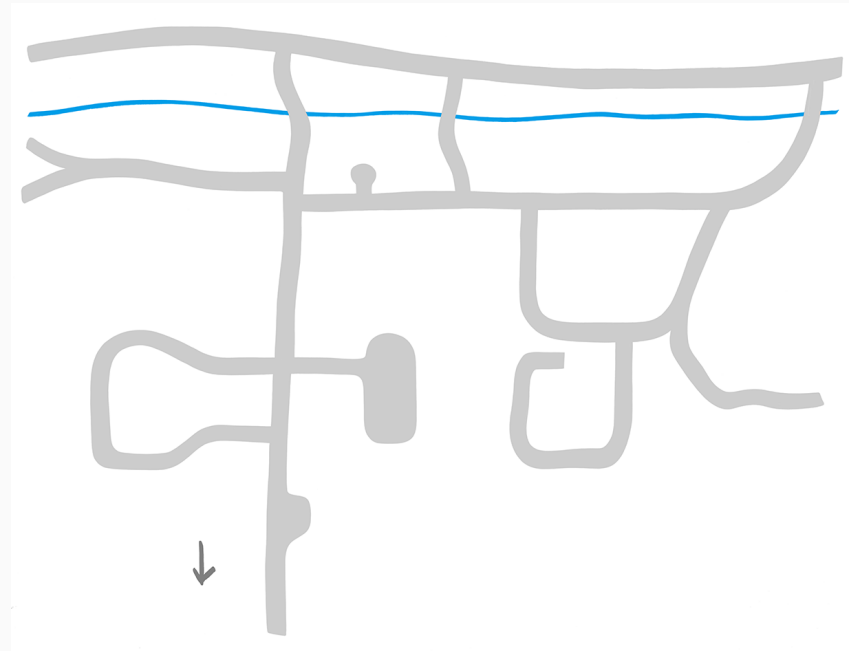
Create a Mind Map



(Master Mason)

# Task 3: Mapping Flamstead

- Can you mark the important places you have learnt about, and make a map of Flamstead?
- Remember to include St Leonard's Church.





# Task 4: Send a postcard from medieval Flamstead

- Imagine you are a visitor to Flamstead and St Leonard's Church in medieval times.
- Draw a picture on a postcard and say what you have seen.

